



PERIOD
HOMES



Stonehill Road
Roxwell CM1 4PQ
Guide Price £900,000-£1,000,000

Stonehill Road, Roxwell, CM1 4PQ

****Guide Price - £900,000 - £1,000,000****

A beautifully presented character detached family home set in the heart of the sought-after village of Roxwell, Mill Cottage perfectly blends period charm with contemporary living. Built on the historic site of the old village windmill, this distinctive home offers an exceptional setting rich in local heritage and surrounded by picturesque countryside views.

Approached via an impressive frontage that provides ample parking, the property immediately conveys a sense of warmth and quality. Inside, the spacious and light-filled accommodation flows effortlessly, creating an ideal environment for both family life and entertaining. The welcoming entrance hall leads to a charming reception room with a bay window, and a versatile office or snug for those seeking a peaceful workspace. To the rear, the stylish kitchen and dining area form the true heart of the home — beautifully designed with modern fittings while retaining a timeless feel. French doors open directly onto the landscaped garden, offering a wonderful space for alfresco dining or relaxed evenings outdoors.

Upstairs, the first floor provides four generous bedrooms, including a principal suite with a dressing area and en-suite shower room. Each bedroom is thoughtfully appointed, offering comfort and style in equal measure. A well-fitted family bathroom completes the accommodation.

Externally, Mill Cottage boasts two distinct outdoor spaces — a landscaped garden to one side, perfect for children and summer gatherings, and a charming courtyard garden to the other, ideal for morning coffee or quiet reflection. An outbuilding provides a gym and garage, enhancing both practicality and lifestyle appeal.

With its exceptional presentation, historical setting, and prominent village location, Mill Cottage is a rare opportunity to own a home of true character in one of Roxwell's most desirable addresses.









STONEHILL ROAD

Approx. Gross Internal Area 195.2 Sq M (2101.4 Sq Ft)

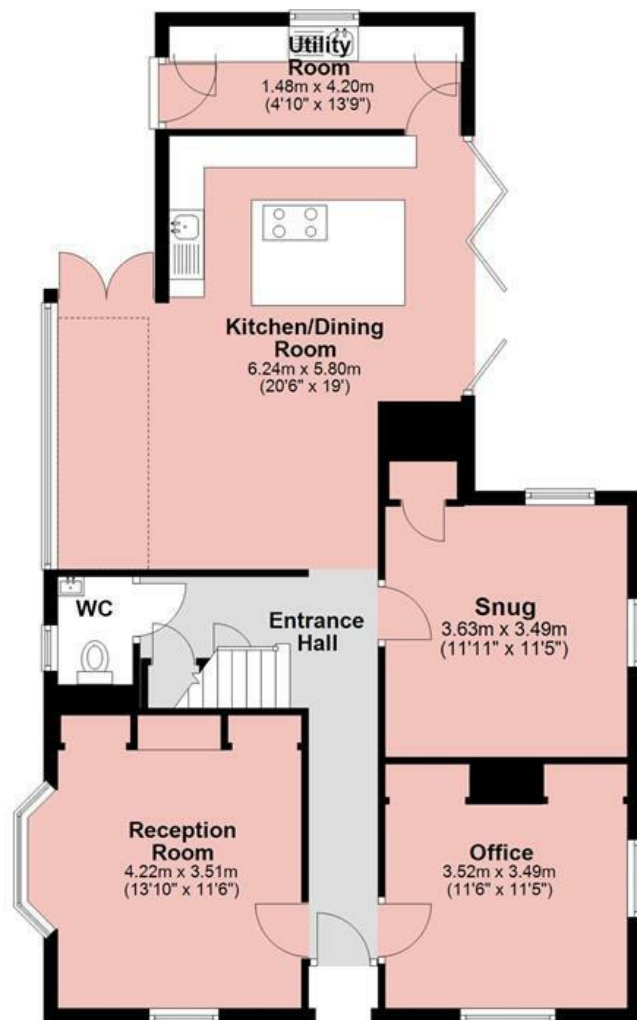


PERIOD HOMES



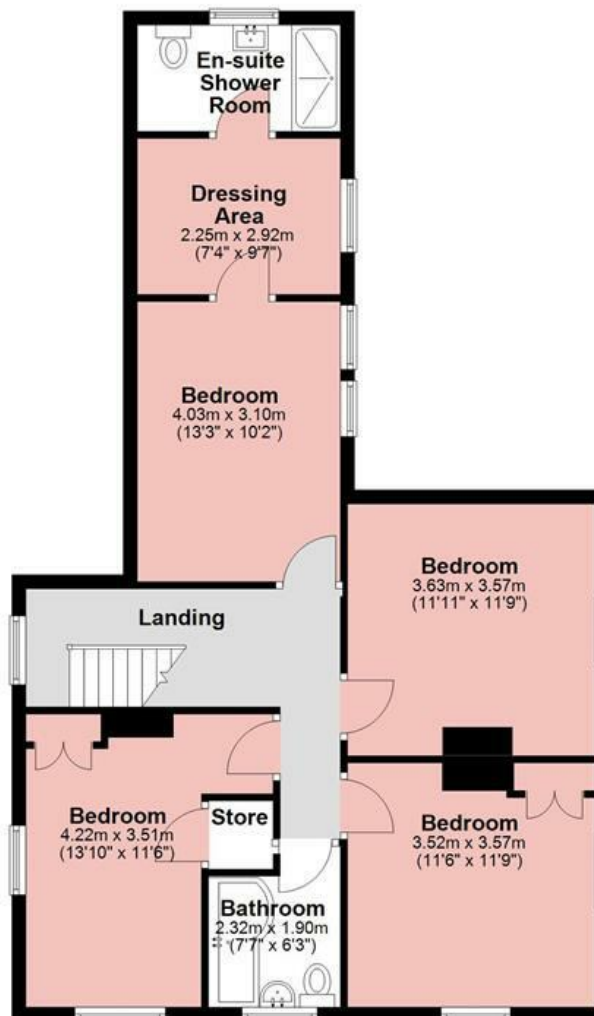
Ground Floor

Approx. 92.8 sq. metres (999.4 sq. feet)



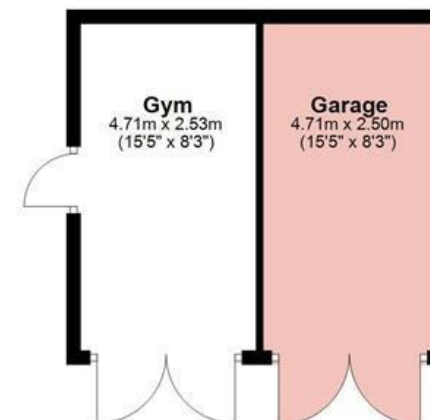
First Floor

Approx. 78.2 sq. metres (842.3 sq. feet)

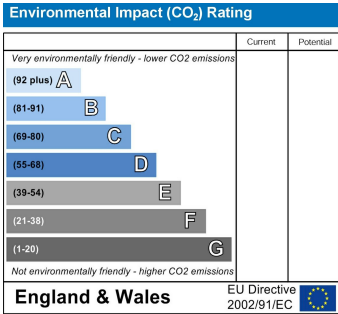
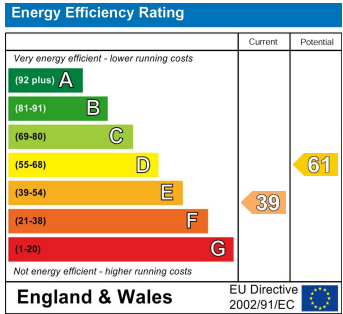
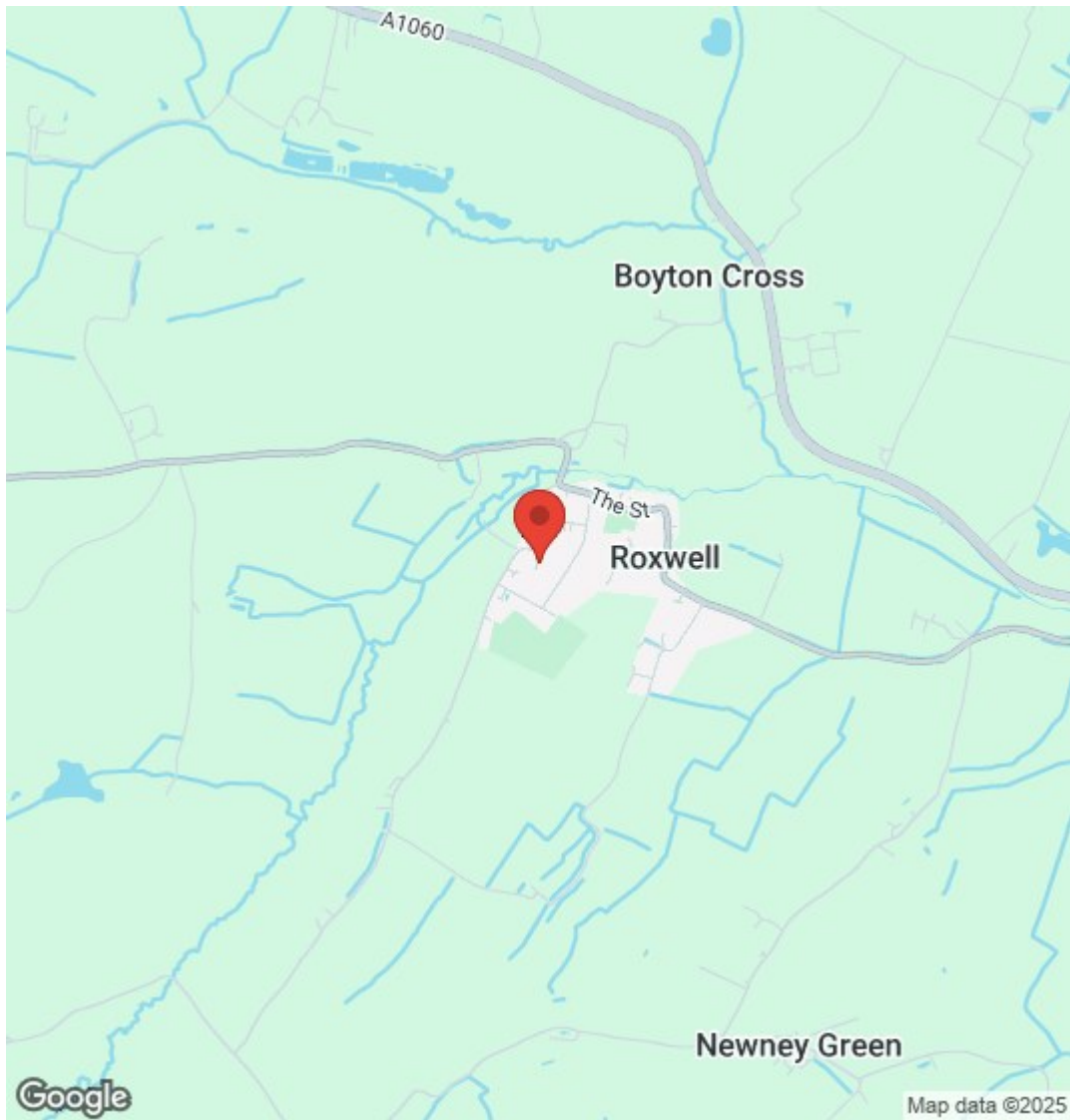


Outbuilding

Approx. 24.1 sq. metres (259.8 sq. feet)



Measurements are approximate and for illustration purposes only. While we do not doubt the accuracy and completeness, we advise you conduct a careful independent assessment of the property to determine monetary value.



PLEASE CALL 01277 288000 TO ARRANGE A VIEWING
www.periodhomes.co.uk

INDEPENDENT ESTATE AGENTS - VALUATIONS WITH NO OBLIGATION - PROFESSIONAL SERVICE

These particulars do not constitute any part of an offer or contract. All measurements are given as a guide, no liability can be accepted for any errors arising therefrom. No responsibility is taken for any other error, omission, or mis-statement in these particulars. Period Homes, a trading style of Walkers Village and Country Homes Limited do not make or give, whether in these particulars, during negotiations or otherwise, any representation whatsoever in relation to this property.

